

Introduction

Roscommon County Council in partnership with Westmeath County Council is currently in the early stages of developing a greenway linking Athlone, Ballyleague / Lanesborough and Roscommon Town. This project is funded through Transport Infrastructure Ireland (TII).

Key Information

Public Consultation No. 2 on the route corridor options will take place between **11th March and 2nd April 2025**.

Stakeholder participation and feedback is key to the success of the project.



Scan the QR code to access the website

Project Benefits

It is envisaged that the Lough Ree Greenway will facilitate sustainable economic development within Athlone, Ballyleague/Lanesborough, Roscommon Town and the surrounding communities through improved connectivity and increased tourism potential. Additionally, it will support a modal shift from cars to active travel while promoting sustainable transportation; environmental appreciation; and economic growth and revitalisation.

The Lough Ree Greenway will integrate with other networks such as the National Cycle Network, the Old Rail Trail Greenway (connecting Athlone to Mullingar) and the Royal Canal Greenway which runs from Longford to Maynooth.



**Increased
Tourism**



**Increased
Active Travel**



**Reduced
Carbon
Emissions**



**Sustainable
Economic
Growth**

Project Opportunities

The Lough Ree Greenway creates an opportunity for greater social inclusion and community cohesion by providing connectivity for towns and rural communities thereby improving access to services, jobs, and social activities. It has the potential to foster stronger community ties by providing shared public spaces for local residents and visitors alike. By offering a safe space for all, the Greenway will promote inclusivity and help build a more cohesive, connected community in the Roscommon, Westmeath and Longford area.

What's Happening Now

The project is currently at Phase 2 Options Selection. The purpose of Phase 2 is to develop, examine and assess route corridor options to identify a preferred option for the project. The assessment of the route corridor options will be undertaken in accordance with the Strategy for the Future Development of National and Regional Greenways, the Code of Best Practice for National and Regional Greenway, and Transport Infrastructure Ireland (TII) Project Management and Project Appraisal Guidelines.

Submissions received during the second public consultation on route corridor options and landowner feedback will be considered in the selection of the preferred option.

Public Consultation No.2 Route Corridor Options will take place from 11th March and 2nd April 2025.

Public Consultation - Get Involved

The second public consultation for the Lough Ree Greenway is taking place from March 11th to April 2nd 2025, with a public consultation event on Tuesday 11th March 2025 from 3:00pm to 8:00pm at the Hodson Bay Hotel, Athlone, N37 XR82. Your feedback is important to the project and will support the project team in identifying a preferred route corridor option.

Make a Submission

A feedback form is available on the project website www.loughreegreenway.ie

Feedback can be submitted as follows:

Online: www.loughreegreenway.ie

Email: info@loughreegreenway.ie

Post: Greenways Team, Roscommon National Roads Regional Office, Racecourse Road, Roscommon, F42 WY23.

Online
Feedback
Form



Landowner Engagement

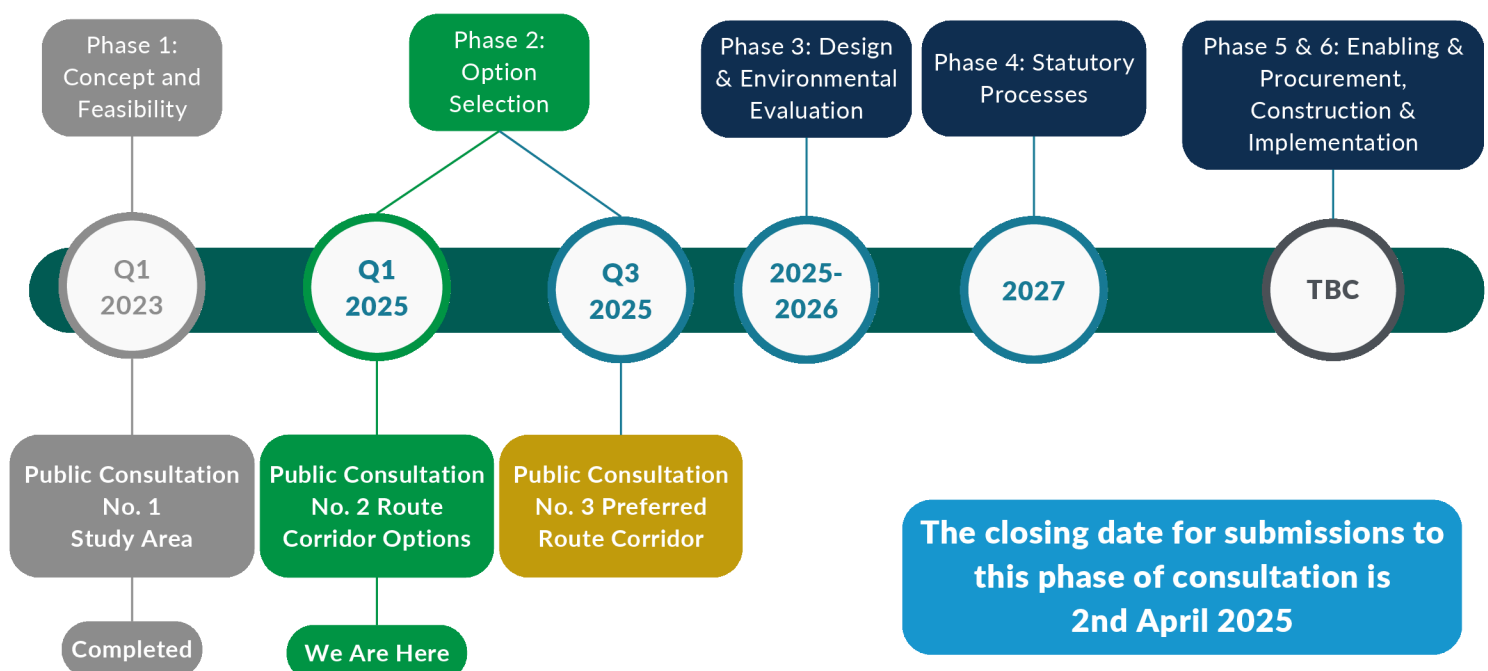
The Code of Best Practice for National and Regional Greenways was published by the Government in December 2021. TII and the local authorities worked with the farming representatives and other stakeholders to develop the Code of Best Practice. The Code sets out the process for the delivery and management of greenways and provides information on the acquisition of privately owned lands for the greenway. Project Liaison Officers (PLOs) will be available to meet with landowners by appointment. PLOs are also available to talk on the phone or by online virtual meeting. The PLOs will be the main point of contact for the landowner and will ensure that the landowner's interests and concerns are taken into consideration.

Local Feedback

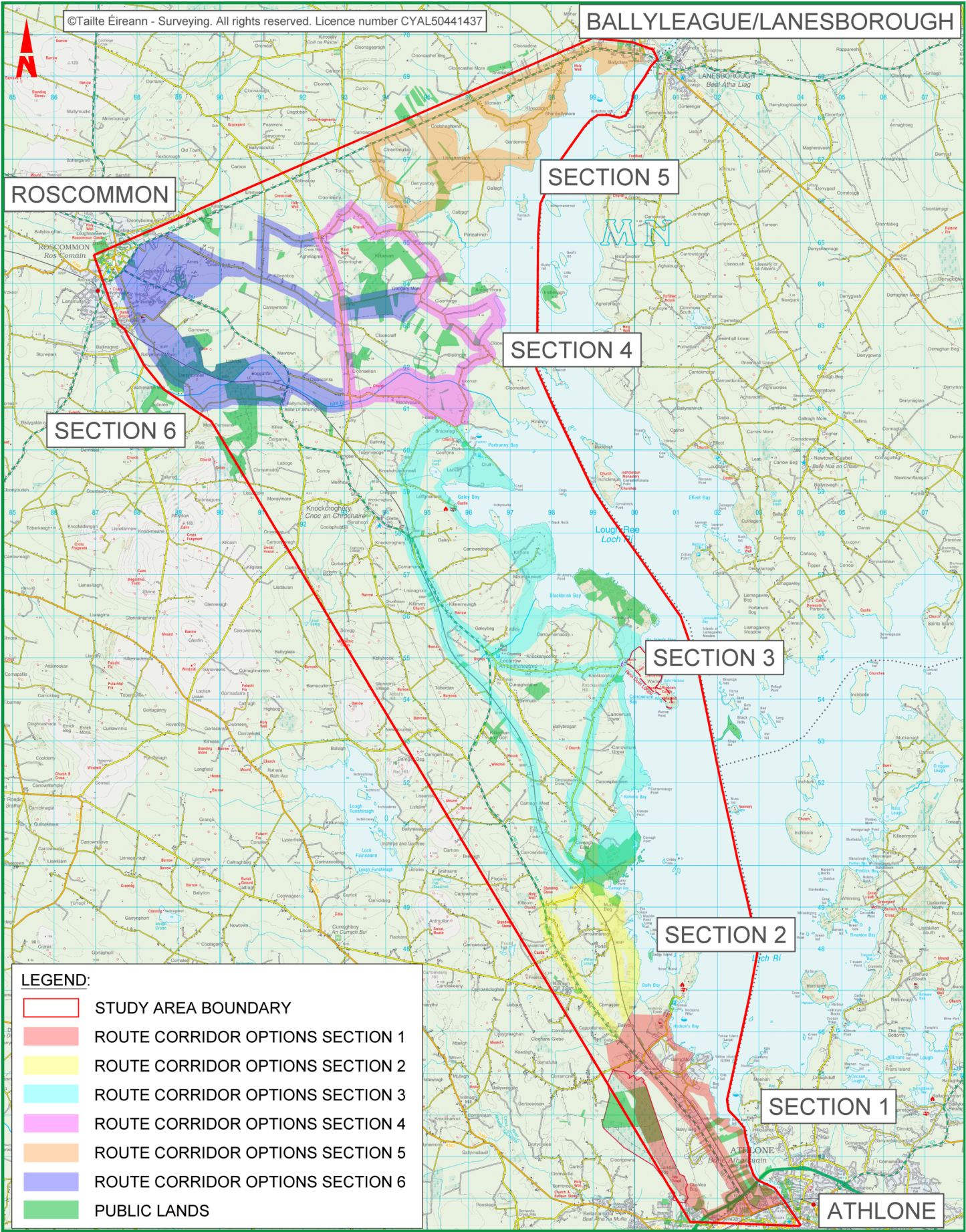
Local feedback is central to the success of this project. We welcome your views, ideas and concerns throughout the development of the project on the following:

- Potential routes that could be considered.
- Any potential constraints known to you.
- Locations, attractions, or facilities in your locality that could be attractive to, or benefit from a greenway.
- Scenic and/or heritage features in your area.
- Environmental / Biodiversity features you wish to highlight to the project.

Project Timeline



Route Corridor Options



Lough Ree Greenway - Public Consultation No.2

Questionnaire - Please tell us your views



Please complete the feedback form and return by email or post to:

Email: info@loughreegreenway.ie

Post: Greenways Team, Roscommon National Roads Regional Office,
Racecourse Road, Roscommon, F42 WY23.

Online
Feedback
Form



Name:	Email:
Address: _____ _____ _____ _____ _____ _____ Eircode: _____	Telephone No. _____ Would you use the Greenway? Yes <input type="checkbox"/> No <input type="checkbox"/> Do you live or own property within or adjacent to one of the Route Corridor Options / Consultation Areas? Yes <input type="checkbox"/> No <input type="checkbox"/>

Please tell us your views on the Route Corridor Options and provide any information that you would like the project team to consider. (Please use additional paper and include supporting documents / pictures / maps if you wish).

☐ Please tick here if you would like to be contacted regarding project news and updates.

Data Protection: By providing my details in this feedback form, I consent to the use of my personal data in accordance with Roscommon County Council's Privacy Notice which is available at: https://www.roscommoncoco.ie/en/privacy_policy/

Submissions must be received by 4pm on Wednesday 2nd April 2025

Thank you for your feedback



Tionscadal Éireann
Project Ireland
2040



Comhairle Contae
Ros Comáin
Roscommon
County Council

